



LEVEL MEASURING

WITH ROPE LEVEL GAUGE





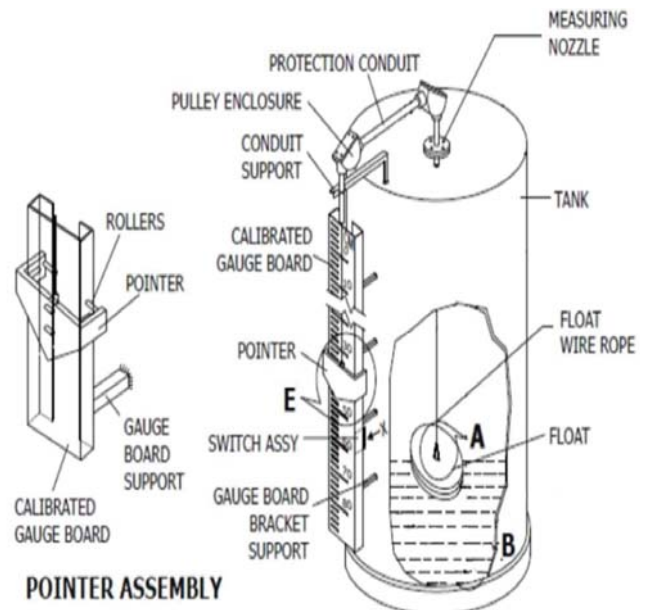
Introductions

A large self centered float follows the liquid level in this gauge. A rope fitted with a float moves over a pair of dust free pulleys. Level is indicated by a pointer which moves on a 150 & 300 mm width aluminum or Stainless steel scale.

Mainly used for storage tanks of Oil, Fire/DM water Alkalis, Acids furnace Oils, Lube Oil, Vegetable Oil, Molasses, Glucose etc.

Vapors seals (Magnetic) for special applications like HCl, N₂ purged tank, diluted alkalis, dilute HNO₃, NH₃ Methanol, Benzene, Toluene, IPA etc.

In vapor seal there is no sealing liquids so we get absolute vapor tightness.



Applications

Typical industries:

- Oil and gas production
- Petrochemical
- Chemical
- Power generation
- Water and wastewater treatment
- Food and beverage
- Pharmaceutical
- Pulp and paper
- Biotech
- Semiconductor

Typical applications:

- Oil
- Water
- High and low pressure separators
- Oil and water interface
- Acids - hydrofluoric, hydrochloric, nitric, sulfuric, etc.
- Refined petrochemical - gasoline, propane, butane, ethylene, etc.
- Solvents - acetone, toluene, xy-

lene, naphtha

- Gas condensate
- Heat transfer fluids - diathermy, thermion and glycol
- Black, green and red liquor
- Refrigerants
- Alcohols
- Caustics
- Chlorine
- Steam condensate - boiler feedwater heater boiler drum level control
- Bitumen
- Vacuum tower bottoms
- Ammonia
- Liquid Sulphur
- Most liquid to liquid interfaces



Mounting Type

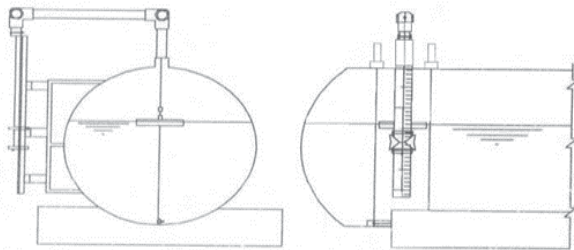


Fig. 4 Mounting for Horizontal Tank

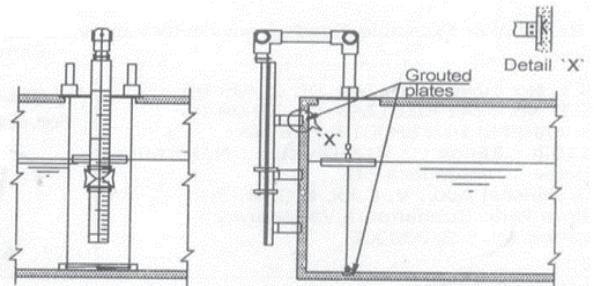


Fig. 5 Mounting for RCC Tank

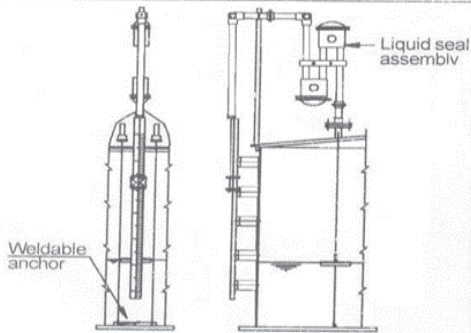


Fig. 6 Mounting with Liquid Seal Assembly

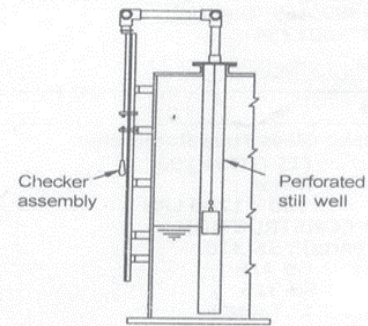


Fig. 7 Mounting with Stilling Pipe & Checker Assembly

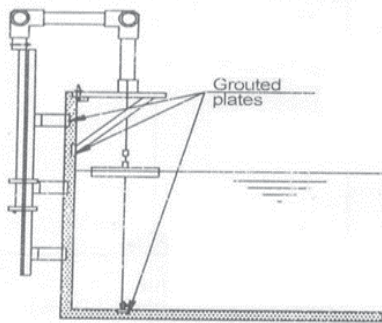


Fig. 8 Mounting on Open Tank

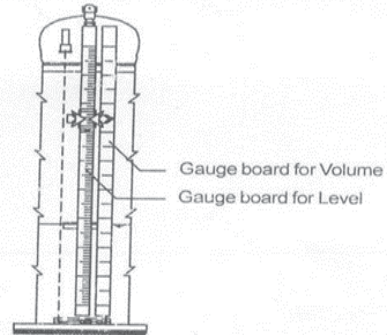


Fig. 9 Level + Volume Indication

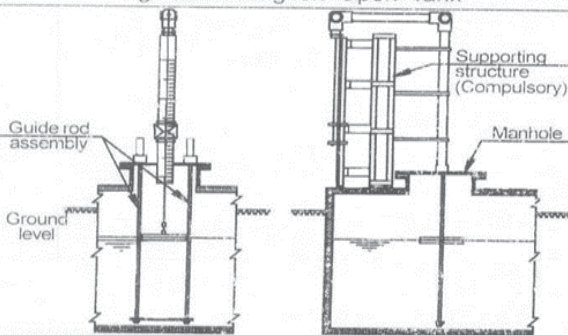


Fig. 10 Top of Tank Mounting with Guide Rod Assembly

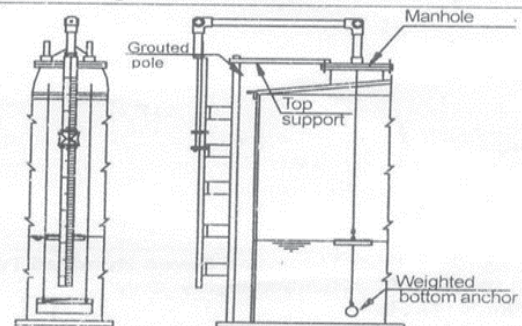


Fig. 11 Mounting with Weighted Guide wire Anchor (Tank in Service).



Typical Specification

- Type** : Float actuated target reading.
- Range** : Up to 20 meters (Depends on diameter of selected float).
- Service** : Clean and clear non corrosive liquids.
- Resolution** : 10 mm on the gauge board.
- Markings** : On the gauge board, minor markings at every 100 mm in black (40 mm high) and major markings at every 1000 mm in red (70 mm high).

Floats :

SIZE (mm)	GUIDED/ NGUIDED	USED FOR FOR RANGE	ACCURACY (mm)
300	Guided	0-20 mtrs	± 5
200	Guided	0-10 mtrs	± 10
100	Unguided	0-3 mtrs	± 25 (without liquid seal) ± 45 (with liquid seal)

Fittings:

- Guide wire spring assembly with SS 316 guide wires – 2 Nos. 90° elbow assembly in cast Aluminum polyurethane painted with Ss316 pulley & Teflon bush – 2 Nos. Guide wire anchor (CS/SS304/SS316) – 1 No.
- Indicator assembly in Aluminum + SS with SS316 float cable – 1 no.
- Aluminum polyurethane painted gauge boards {Total Gauge board length = (tank height + 200) mm} with mounting brackets and suitable hardware required as per tank height.

Optional :

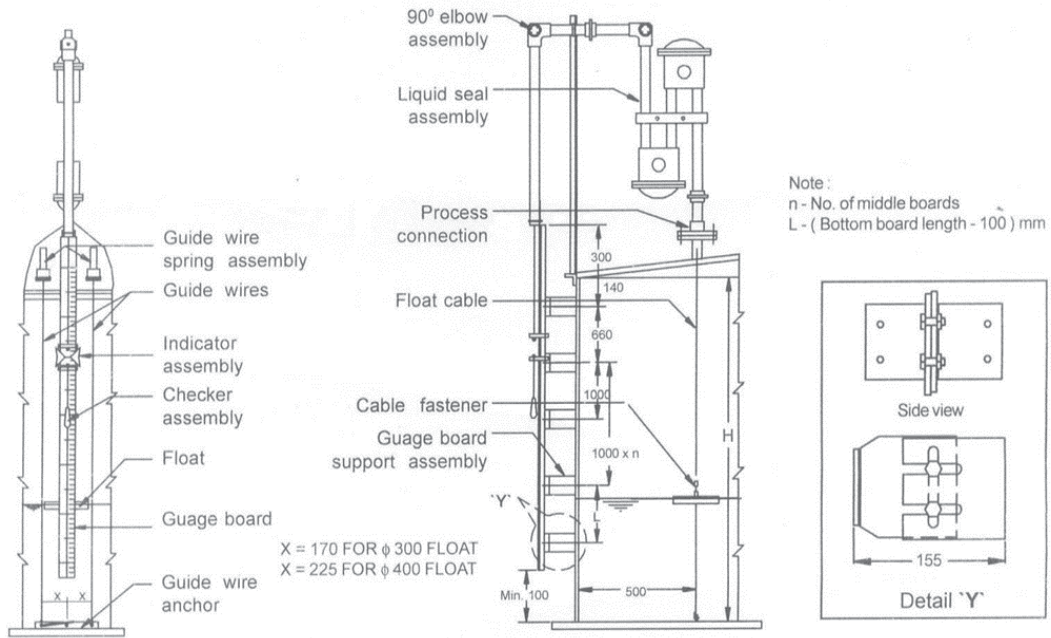
- Liquid seal assembly for 200 / 300 / 600 mm WC (water column) with transformer oil as sealant liquid and piping in GI (Optional piping in SS).
- For liquid seal assembly, refer leaflet no. LF-133-0805 & LF-133-812.
- Operation checker assembly with wooden handle and nylon rope.

Note:

- Accuracy mentioned is at specific gravity equal to 1.
- For unguided 100 mm float, a perforated stilling pipe (150 mm min) must be provided to avoid float swinging. For such applications guide wires and bottom anchor are not required.



Accessories





Contact us

**Instrumentation
manufacturer
& designer**

Tel : 021-46069694

Aramakco.com

Info@aramakco.com

Sales@aramakco.com