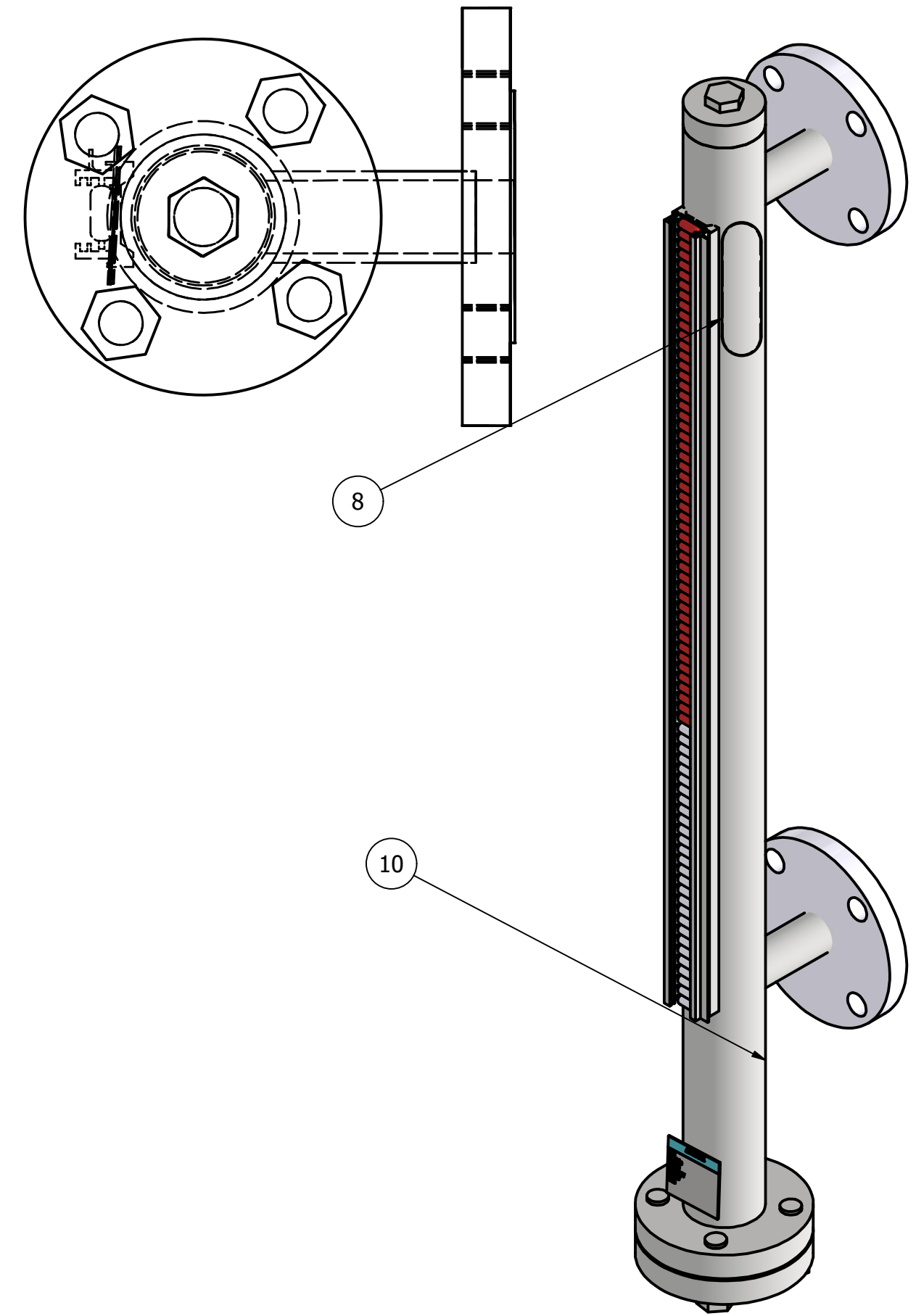
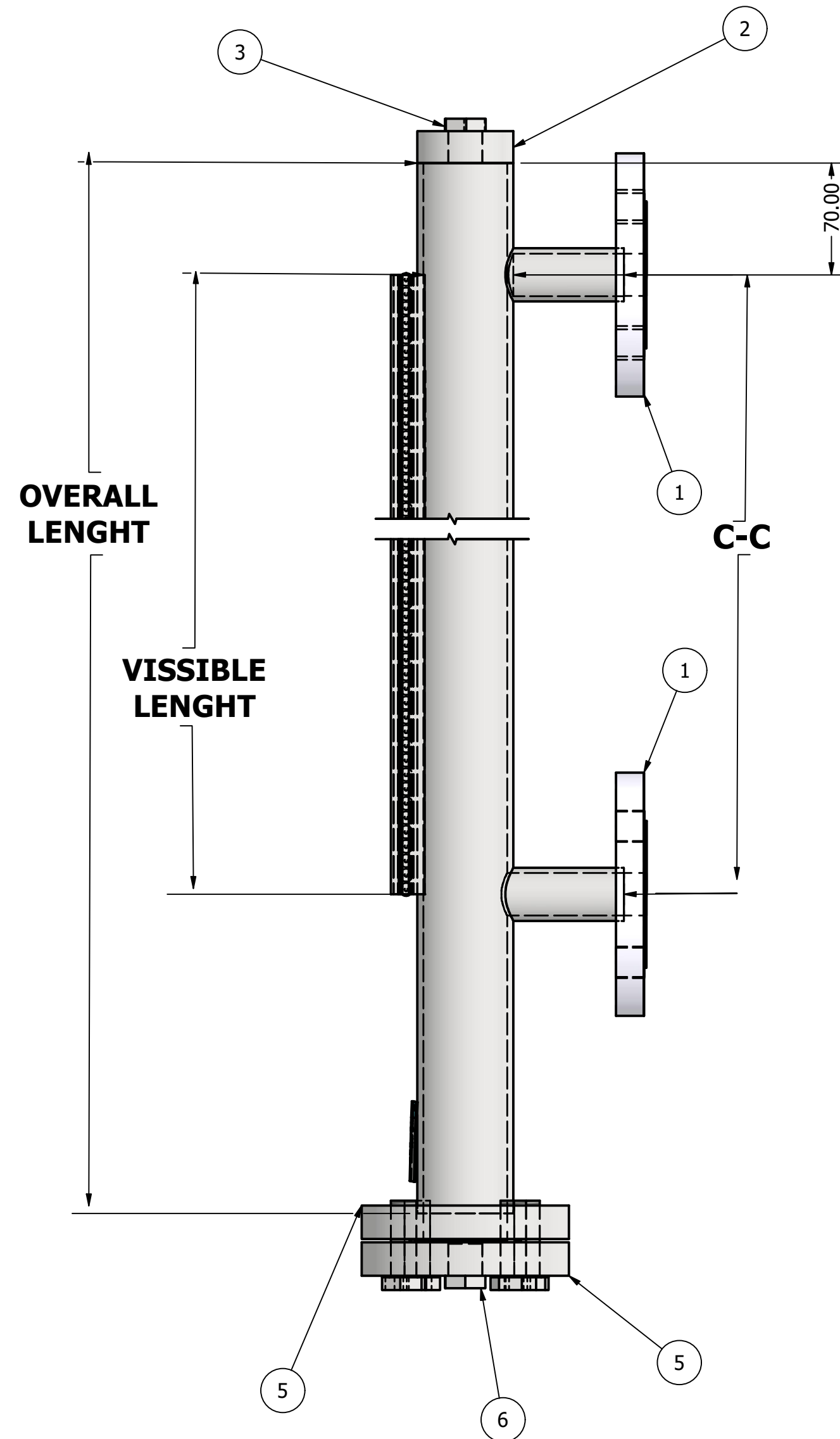


| NO. | QTY. | DESCRIPTION | MATERIAL | MOUNTING | DESIGN | C-C | VISSIBLE | PROCESS CONNECTION | CHAMBER END TOP | CHAMBER END BOTTOM |
|-----|------|----------------------|----------|----------|--------|-----|----------|--------------------|-----------------|--------------------|
| 1 | | MAGNETIC LEVEL GAUGE | | | | | | | | |



| PART LIST | | |
|-----------|--------------------------|------|
| ITEM | DESCRIPTION | QTY. |
| 1 | FLANGE 2" RF | 2 |
| 2 | CAP | 1 |
| 3 | PLUG 1/2" | 1 |
| 4 | BOLT | 4 |
| 5 | FLANGE (ARAMAK STANDARD) | 2 |
| 6 | PLUG 1/2" | 1 |
| 7 | NUT | 8 |
| 8 | MAGNETIC FLOATER | 1 |
| 9 | INDICATOR | 1 |
| 10 | MAIN PIPE 2" | 1 |

DESCRIPTION:

MAGNETIC LEVEL GAUGE

DRAWN BY: **MR.Yadegary**
 CHEKED BY: **MR.Zarrineh**
 DESIGNED BY: **MR.zalpour**

2024/12/08
 2024/12/08
 2024/12/08

PURCHASE:

KARIMI

NOTE:
 Drawing no t to scale
 Unit:mm

Rev:00

WWW.ARAMAKCO.COM


ARAMAK SANAT HOOSHMAND

EMAIL: SALES@ARAMAKCO.COM